

# Thru-Bulkhead Receptacle

TC Series • High-Performance Crimp Connectors



## Dual receptacle ends for bulkhead feed-thru

This special connector has receptacles on both sides of the shell in order to connect cable plugs from both sides. One side of the shell features socket contacts, the other side pin contacts. A mounting bracket and gasket are recommended.

## TC22 W 18-11 PS N - 02

- 1 **BASIC PART NUMBER**  
TC22 Thru-bulkhead receptacle
- 2 **MATERIAL & FINISH**  
N Aluminum, electroless nickel  
W Aluminum, olive drab cadmium  
K\* Stainless steel, passivated (firewall rated)
- 3 **SHELL SIZE & INSERT ARRANGEMENT**  
See Insert Arrangement Selection table, p. E-14
- 4 **CONTACT STYLE**  
PS Pin / socket (non-configurable)
- 5 **INSERT ROTATION**  
N Normal or W, X, Y, Z, see p. E-14 for availability
- 6 **OPTIONAL ACCESSORY KIT (OMIT FOR NONE)**  
02 Protective covers (2x) + mounting gasket  
03 02 kit + mounting bracket + sealing screws

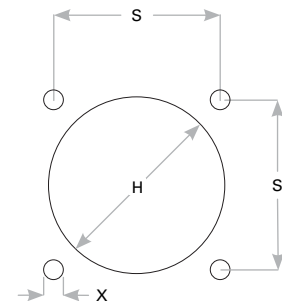
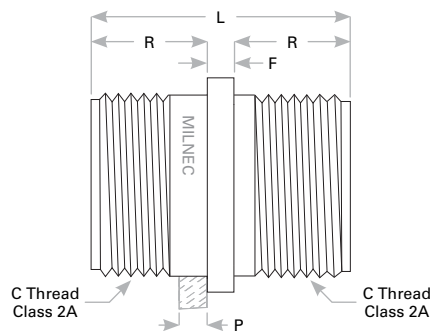
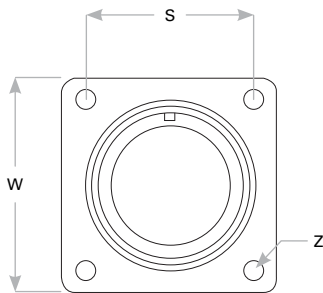
\* Please consult an authorized distributor for lead time and minimum quantity requirements.

**Note:** See part builder (p. E-13) for additional kit options.

## Receptacle Dimensions

Shell Size	W	Z	L Max	R	F	C Thread Class 2A	Min Thread Length	P Max Rear Panel†	S	X	H
10SL	NOT AVAILABLE										
12S	1.094 (27.8)	.120 (3.0)	1.563 (39.7)	.711 (18.1)	.141 (3.6)	.7500-20 UNEF	.406 (10.3)	.266 (6.8)	.812 (20.6)	.120 (3.1)	.812 (20.6)
14S	1.188 (30.2)	.120 (3.0)	1.563 (39.7)	.711 (18.1)	.141 (3.6)	.8750-20 UNEF	.406 (10.3)	.266 (6.8)	.906 (23.0)	.120 (3.1)	.938 (23.8)
16S	1.281 (32.5)	.120 (3.0)	1.563 (39.7)	.711 (18.1)	.141 (3.6)	1.0000-20 UNEF	.406 (10.3)	.266 (6.8)	.969 (24.6)	.120 (3.1)	1.062 (27.0)
18	1.375 (34.9)	.120 (3.0)	2.125 (54.0)	.985 (25.0)	.155 (4.0)	1.1250-18 UNEF	.625 (15.9)	.312 (7.9)	1.062 (27.0)	.120 (3.1)	1.188 (30.2)
20	1.500 (38.1)	.120 (3.0)	2.125 (54.0)	.985 (25.0)	.155 (4.0)	1.2500-18 UNEF	.625 (15.9)	.312 (7.9)	1.156 (29.4)	.120 (3.1)	1.312 (33.3)
22	1.625 (41.3)	.120 (3.0)	2.125 (54.0)	.985 (25.0)	.155 (4.0)	1.3750-18 UNEF	.625 (15.9)	.312 (7.9)	1.250 (31.8)	.120 (3.1)	1.438 (36.5)
24	1.750 (44.5)	.147 (3.7)	2.125 (54.0)	.985 (25.0)	.155 (4.0)	1.5000-18 UNEF	.625 (15.9)	.312 (7.9)	1.375 (34.9)	.147 (3.7)	1.562 (39.7)
28	2.000 (50.8)	.147 (3.7)	2.125 (54.0)	.985 (25.0)	.155 (4.0)	1.7500-18 UNS	.625 (15.9)	.312 (7.9)	1.562 (39.7)	.147 (3.7)	1.812 (46.0)
32	2.250 (57.2)	.173 (4.4)	2.125 (54.0)	.985 (25.0)	.155 (4.0)	2.0000-18 UNS	.625 (15.9)	.312 (7.9)	1.750 (44.5)	.173 (4.4)	2.062 (52.4)
36	2.500 (63.5)	.173 (4.4)	2.125 (54.0)	.985 (25.0)	.155 (4.0)	2.2500-16 UN	.625 (15.9)	.312 (7.9)	1.938 (49.2)	.173 (4.4)	2.312 (58.7)

Dimensions are in inches (mm). † Max panel thickness applies only to rear mount applications to ensure proper coupling clearance.



Panel Cutout

Rev. 1225.1