

# Thru-Bulkhead Receptacle

PS Series • High-Performance Solder Connectors

## PS22 F 18-11 PS N - 02

- 1 **BASIC PART NUMBER**  
PS22 Thru-bulkhead receptacle
- 2 **MATERIAL & FINISH**  
F Aluminum, olive drab cadmium
- 3 **SHELL SIZE & INSERT ARRANGEMENT**  
See Insert Arrangement Selection table, p. C-14
- 4 **CONTACT STYLE**  
PS Pin / socket (non-configurable)
- 5 **INSERT ROTATION**  
N Normal or W, X, Y, Z, see p. C-14 for availability
- 6 **OPTIONAL ACCESSORY KIT (OMIT FOR NONE)**  
02 Protective covers (2x) + mounting gasket  
03 02 kit + mounting bracket + sealing screws



### Bulkhead feed-thru with dual receptacle ends

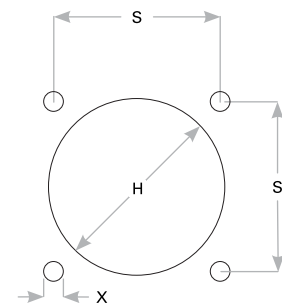
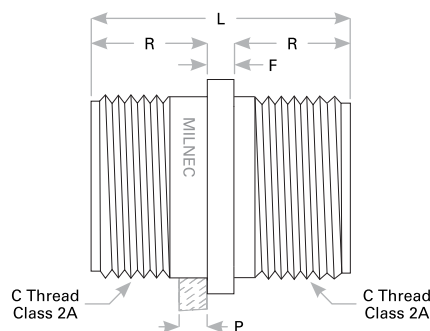
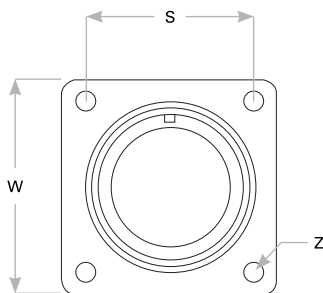
This unique connector has receptacles on both sides of the shell, allowing cable plugs to connect from both sides. The long side of the shell features socket contacts, the short side pin contacts. A mounting bracket and gasket are recommended.

**Note:** See part builder (p. C-13) for additional kit options.

## Receptacle Dimensions

Shell Size	W	Z	L	R	F	C Thread Class 2A	Min Thread Length	P Max Rear Panel†	S	X	H
10SL	NOT AVAILABLE										
12S	1.094 (27.8)	.120 (3.0)	1.563 (39.7)	.711 (18.1)	.141 (3.6)	.7500-20 UNEF	.406 (10.3)	.266 (6.8)	.812 (20.6)	.120 (3.1)	.812 (20.6)
14S	1.188 (30.2)	.120 (3.0)	1.563 (39.7)	.711 (18.1)	.141 (3.6)	.8750-20 UNEF	.406 (10.3)	.266 (6.8)	.906 (23.0)	.120 (3.1)	.938 (23.8)
16S	1.281 (32.5)	.120 (3.0)	1.563 (39.7)	.711 (18.1)	.141 (3.6)	1.0000-20 UNEF	.406 (10.3)	.266 (6.8)	.969 (24.6)	.120 (3.1)	1.062 (27.0)
18	1.375 (34.9)	.120 (3.0)	2.125 (54.0)	.985 (25.0)	.155 (4.0)	1.1250-18 UNEF	.625 (15.9)	.312 (7.9)	1.062 (27.0)	.120 (3.1)	1.188 (30.2)
20	1.500 (38.1)	.120 (3.0)	2.125 (54.0)	.985 (25.0)	.155 (4.0)	1.2500-18 UNEF	.625 (15.9)	.312 (7.9)	1.156 (29.4)	.120 (3.1)	1.312 (33.3)
22	1.625 (41.3)	.120 (3.0)	2.125 (54.0)	.985 (25.0)	.155 (4.0)	1.3750-18 UNEF	.625 (15.9)	.312 (7.9)	1.250 (31.8)	.120 (3.1)	1.438 (36.5)
24	1.750 (44.5)	.147 (3.7)	2.125 (54.0)	.985 (25.0)	.155 (4.0)	1.5000-18 UNEF	.625 (15.9)	.312 (7.9)	1.375 (34.9)	.147 (3.7)	1.562 (39.7)
28	2.000 (50.8)	.147 (3.7)	2.125 (54.0)	.985 (25.0)	.155 (4.0)	1.7500-18 UNS	.625 (15.9)	.312 (7.9)	1.562 (39.7)	.147 (3.7)	1.812 (46.0)
32	2.250 (57.2)	.173 (4.4)	2.125 (54.0)	.985 (25.0)	.155 (4.0)	2.0000-18 UNS	.625 (15.9)	.312 (7.9)	1.750 (44.5)	.173 (4.4)	2.062 (52.4)
36	2.500 (63.5)	.173 (4.4)	2.125 (54.0)	.985 (25.0)	.155 (4.0)	2.2500-16 UN	.625 (15.9)	.312 (7.9)	1.938 (49.2)	.173 (4.4)	2.312 (58.7)

Dimensions are in inches (mm)



Panel Cutout

Rev. 1112.1